


Fortis

Compact

Stronger Surfaces for Smarter Spaces.

A photograph of a modern office interior. The scene is dimly lit, showing a long table with several chairs around it. Large windows in the background offer a view of an outdoor area with plants and a building. The overall aesthetic is clean and professional.

www.fortiscompact.com.au

Fortis Compact Laminate is designed to deliver both style and strength. With a sleek, modern finish and exceptional durability.

It's built to handle the demands of high-traffic environments.

Fortis is highly resistant to scratches, wear, impact and impervious to moisture and humidity.

This making it the ideal choice for spaces that need to look great and last.

This self-supporting panel is incredibly versatile and ideal for a wide range of internal applications.

Whether it's public amenities, lockers, furniture or wall lining, Fortis Compact Laminate offers long-lasting performance backed by a 10-year limited warranty.

Properties:



For installation, fabrication and samples, contact:

Fortis Compact Laminate is available in sheet sizes that are ideal for partitioning applications, helping reduce waste and simplify installation.

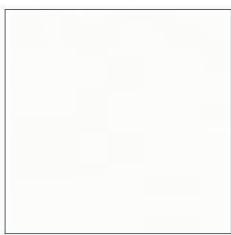
Our stocked sizes are:

13mm x1830x4270

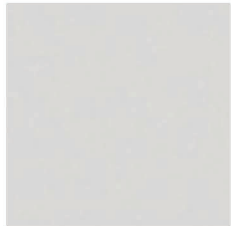
13mm x 1830x2440

This is to suit 2000mm or floor to ceiling cubicle dimensions which allows for minimal offcuts during fabrication. This size offers excellent privacy for partitions in public amenities, change rooms, and commercial bathrooms.

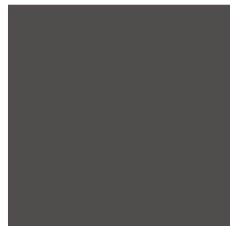
The Fortis Compact Collection



Snow White



Light Grey



Ash Grey



Black



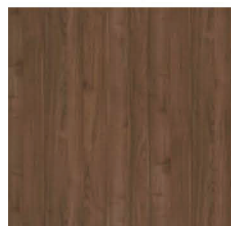
Portland



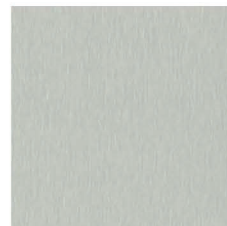
Heritage Oak



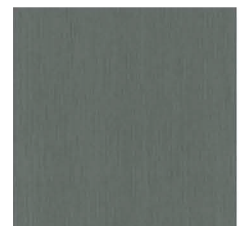
Elegant Walnut



Virginia Walnut



Brushed Grey



Brushed Titanium

Need a custom size or thickness?

We can help with that too, just reach out to discuss your project requirements at www.fortiscompact.com.au.

For pricing and enquiries on partitioning and fabrication, contact our preferred fabricator .

The Fortis Extended Collection



American Maple



Light Oak



Mocha Wood



Teakwood



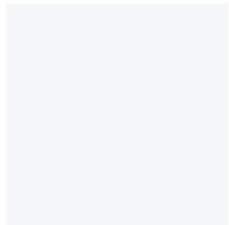
Lilac Maple



Snow Oak



Black Pine



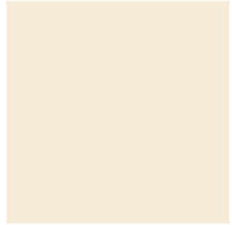
Hazy White



Warm White



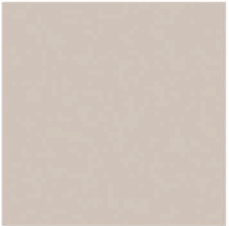
Lotus White



Beige



Dark grey



Porcelain Clay



Earth Stone



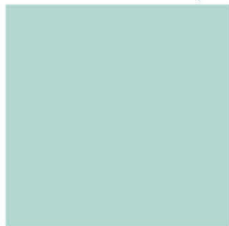
Smoke



Carbon



Burnt Umber



Seafoam



Ink Pool



Sky Breeze



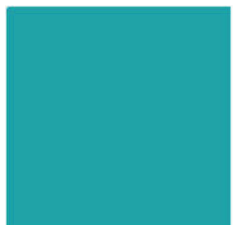
Blueprint



Coastline



Bud



Aqua Rush



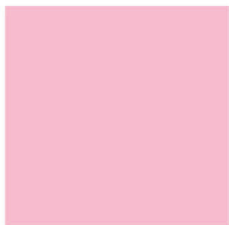
Marigold



Orange



Red



Blush

Technical data

Property : Flexural Strength

Conditions : Specimen: 240mm × 19.894mm × 11.405mm

Testing speed: 5.0mm/min

Span: 186mm

Lab environmental condition: 23±2°C, 50±5%RH

Value : 117Mpa

Standard : (ISO178)

Property : Tension Strength

Conditions : specimen portion: 24.35mm

Specimen thickness: 11.44mm

Testing speed: 10mm/min

Lab environmental condition: 23±2°C, (50±5)%RH

Value : 61.3Mpa Test specimens were broken at the holding position

Standard : (ISO527)

Property : Young Modulus

Conditions : Test conditions: 21.2°C / 42.6%

Test speed: 2mm/min

Testing speed: 10mm/min

specimen dimensions: Per ISO 527 type 1A

Value : Average thickness: 3.94mm, Average width: 10.19mm,

Average failure load: 4032N, Average young modulus: (14439Mpa)

Standard : (ISO527)

Property : Dimensional Stability Under Dry

Conditions : Specimen: 200mm × 50mm × 11.4mm, 8pcs (4pcs for each direction)

Dry heat test: 70°C, 24h

Lab environmental condition: (23±2)°C, (50±5)%RH

Value : -0.18% (direction1) .-0.18% (direction2)

Standard : (EN438-2.17)

Property : Dimensional Stability Under Humidity

Conditions : Specimen: 200mm × 50mm × 11.4mm, 8pcs (4pcs for each direction)

High humidity test: 40°C, 90%RH, 96h

Lab environmental condition: (23±2)°C, (50±5)%RH

Value : 0.08% (direction1), 0.12% (direction2)

Standard : (EN438-2.17)

Property : Fire Resistance Vertical Burning

Conditions : Specimen: 125mm × 13.20mm × 11.48mm

As received: (23±2)°C, (50±5)%RH, 48h

Ageing: (70±2)°C, 16h

Desiccator: (23±2)°C, 4h

Value : Classification: V-0

Standard : (UL94)

Size tolerance: ±10 / -0 mm

Density: 1450kg/m³

Thickness: 3-25mm

Thickness tolerance: 3-5mm: ±0.4mm

5-25mm: ±0.5mm

Sizes Available

1220mm×1830mm,

1220mm×3660mm,

1530mm×1830mm,

1530mm×3660mm,

1830mm×3660mm,

1220mm×2440mm,

1220mm×2800mm,

1530mm×2440mm,

1530mm×4270mm,

1830mm×4270mm.

1220mm×3050mm,

1300mm×3050mm,

1530mm×3050mm,

1830mm×2440mm,

Warranty

Fortis Compact Laminate – Lifetime Limited Warranty

Warranty Coverage

Fortis Compact warrants that its compact laminate panels are free from defects in materials and workmanship for the lifetime of the product under normal use and service conditions.

This warranty applies only to products that have been:

- Properly installed according to Fortis Compact's installation guidelines.
- Used for their intended purpose in indoor commercial or residential environments.

What's Covered

- Delamination or warping due to manufacturing defects.
- Surface defects present at the time of delivery.
- Structural failure under normal usage conditions.

What's Not Covered

- Damage caused by improper installation, handling, or storage.
- Exposure to excessive moisture, heat, or direct sunlight.
- Scratches, stains, or fading due to wear and tear or cleaning with abrasive materials.
- Modifications or repairs not authorised by Fortis Compact.
- Products used in exterior applications or high-humidity environments unless specifically rated for such use.

Claim Process

To make a warranty claim, please contact Fortis Compact at support@fortiscompact.com with the following:

- Proof of purchase (invoice or receipt).
- Description of the issue.
- Photographic evidence of the defect.
- Installation details (location, date, installer)

Fortis Compact reserves the right to inspect the product and determine the validity of the claim. If approved, Fortis Compact will, at its discretion, repair, replace, or refund the defective product.

Limitations of Liability

This warranty is limited to the original purchaser and is non-transferable.

Fortis Compact shall not be liable for any incidental or consequential damages arising from the use or inability to use the product.

This warranty does not affect your statutory rights under Australian Consumer Law.